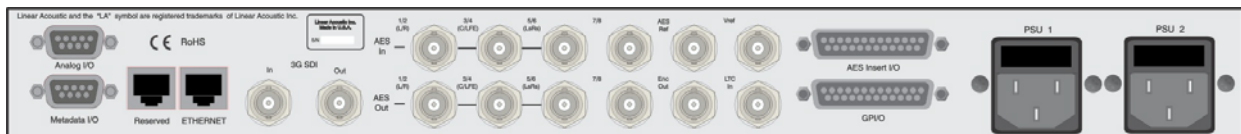


AERO.1000 Audio/Loudness Manager

User Guide

Release Date: March 2013

Software Version: V0.13.29



Linear Acoustic Inc.

Phone: 717-735-3611

FAX: 717-735-3612

Web: www.LinearAcoustic.com



108 Foxshire Drive | Lancaster, PA 17601 USA | T: +1.717.735.3611 | F: +1.717.735.3612 | TelosAlliance.com

Warranty Information

DISCLAIMER OF WARRANTIES: Products manufactured by Linear Acoustic are warranted against defects in material and workmanship under the standard Telos Alliance 5-year warranty from the date of purchase. **THERE ARE NO OTHER IMPLIED OR EXPRESS WARRANTIES AND NO WARRANTY FOR MERCHANTABILITY OR FITNESS FOR A PARTICULAR PURPOSE.**

During the warranty period Linear Acoustic Inc. will repair, or at our discretion replace, components which prove to be defective, provided the unit is returned, shipped pre-paid to us directly with a return authorization (RA) number clearly marked on the packaging. **Please note, this RA number must be present or package will be refused and returned to sender.**

All requests for repairs MUST include the unit serial number to ensure quick and accurate service.

DEFECTS CAUSED BY UNAUTHORIZED MODIFICATIONS, MISUSE OR ACCIDENTS, UNAUTHORIZED CUSTOMER REPAIRS, OR ANY FURTHER DAMAGE CAUSED BY INADEQUATE PACKAGING FOR SERVICE RETURN ARE NOT COVERED BY THIS WARRANTY.

PLEASE SAVE THE SHIPPING CARTON AND ALL PACKING MATERIALS. FAILURE TO RETURN UNIT IN ORIGINAL SHIPPING CARTON AND PACKING MATERIALS WILL RESULT IN A CHARGE FOR NEW SHIPPING MATERIALS.

LIMITATION OF PERIOD OF ACTION ON CONTRACT: No action, regardless of form, arising out of the transactions under this agreement may be brought by buyer, its successors, agents and/or assigns, more than three years from date of purchase.

LIMITATION OF LIABILITY: It is understood and agreed that Linear Acoustic's liability whether in contract, in tort, under any warranty, in negligence or otherwise shall not exceed the cost of repair or replacement of the defective components and under no circumstances shall Linear Acoustic be liable for incidental, special, direct, indirect or consequential damages, or loss of use, revenue or profit even if Linear Acoustic or its agents have been advised, orally or in writing, of the possibility of such damages.

This product contains Audyne dynamic range processing and is manufactured under license.

This product optionally contains Dolby Digital (AC-3) encoding and/or decoding and is manufactured under license from Dolby Laboratories, Inc. The encoder contains confidential unpublished works and is protected by US and foreign patents and is copyright 2007 Dolby Laboratories, Inc.

This product optionally contains Nielsen Watermarking technology and is manufactured under license.

Linear Acoustic, the "LA" symbol, UPMAX, AEROMAX, AERO.1000, AERO.air, AutoNorm, MetaMAX, AutoMAX-II, AutoVoiceover, AutoVOX, AutoSAP, and CrowdControl, are trademarks or registered trademarks of Linear Acoustic Inc., all other trademarks remain the property of their respective owners.

Regulatory Notices and Fusing Information

FCC

This equipment has been tested and found to comply with the limits for a Class A digital device, pursuant to Part 15 of the FCC Rules. These limits are designed to provide reasonable protection against harmful interference when the equipment is operated in a commercial environment. This equipment generates, uses, and can radiate radio frequency energy and, if not installed and used in accordance with this instruction manual, may cause harmful interference to radio communications. Operation of this equipment in a residential area is likely to cause harmful interference in which case the user will be required to correct the interference at his or her own expense.

Canada

This Class A digital apparatus complies with Canadian ICES-003.

UL

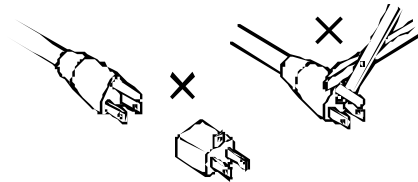


WARNING: Troubleshooting must be performed by a trained technician. Do not attempt to service this equipment unless you are qualified to do so.

Check that the correct fuses have been installed. To reduce the risk of fire, replace only with fuses of the same type and rating.

Exposed portions of the power supply assembly are electrically “hot”. In order to reduce the risk of electrical shock, the power cord **MUST** be disconnected when the power supply assembly is removed.

The ground terminal of the power plug is connected directly to the chassis of the unit. For continued protection against electric shock, a correctly wired and grounded (earthed) three-pin power outlet must be used. Do not use a ground-lifting adapter and never cut the ground pin on the three-prong plug.



UK

As the colours of the cores in the mains lead may not correspond with the coloured markings identifying the terminals in your plug, proceed as follows:

- The core that is coloured green and yellow must be connected to the terminal in the plug identified by the letter E or by the earth symbol \perp or coloured green or green and yellow.
 - The core that is coloured blue must be connected to the terminal that is marked with the letter N or coloured black.
 - The core that is coloured brown must be connected to the terminal that is marked with the letter L or coloured red.
 - This apparatus must be earthed.
-

EU

This equipment complies with the EMC requirements of EN55103-1 and EN55103-2 when operated in an E2 environment in accordance with this manual.

IMPORTANT SAFETY NOTICE

This unit complies with the safety standard EN60065. The unit shall not be exposed to dripping or splashing and no objects filled with liquids, such as coffee cups, shall be placed on the equipment. To ensure safe operation and to guard against potential shock hazard or risk of fire, the following **must** be observed:

- o Ensure that your mains supply is in the correct range for the input power requirement of the unit. (GB)
- o Ensure **fuses** fitted are the **correct rating and type** as marked on the unit.
- o The unit **must be earthed** by connecting to a correctly wired and **earthed** power outlet.
- o The **power cord** supplied with this unit must be wired as follows:

Live—Brown Neutral—Blue Earth—Green/Yellow

IMPORTANT – NOTE DE SECURITE

Ce materiel est conforme à la norme EN60065. Ne pas exposer cet appareil aux éclaboussures ou aux gouttes de liquide. Ne pas poser d'objets remplis de liquide, tels que des tasses de café, sur l'appareil. Pour vous assurer d'un fonctionnement sans danger et de prévenir tout choc électrique ou tout risque d'incendie, veuillez à observer les recommandations suivantes.

- o Le selecteur de tension doit être placé sur la valeur correspondant à votre alimentation réseau. (F)
- o Les fusibles doivent correspondre à la valeur indiquée sur le matériel.
- o Le matériel doit être correctement relié à la terre.
- o Le cordon secteur livré avec le matériel doit être câblé de la manière suivante:

Phase—Brun Neutre—Bleu Terre—Vert/Jaune

WICHTIGER SICHERHEITSHINWEIS

Dieses Gerät entspricht der Sicherheitsnorm EN60065. Das Gerät darf nicht mit Flüssigkeiten (Spritzwasser usw.) in Berührung kommen; stellen Sie keine Gefäße, z.B. Kaffeetassen, auf das Gerät. Für das sichere Funktionieren des Gerätes und zur Unfallverhütung (elektrischer Schlag, Feuer) sind die folgenden Regeln unbedingt einzuhalten:

- o Der Spannungswähler muß auf Ihre Netzspannung eingestellt sein. (D)
- o Die Sicherungen müssen in Typ und Stromwert mit den Angaben auf dem Gerät übereinstimmen.
- o Die Erdung des Gerätes muß über eine geerdete Steckdose gewährleistet sein.
- o Das mitgelieferte Netzkabel muß wie folgt verdrahtet werden:

Phase—braun Nulleiter—blau Erde—grün/gelb

NORME DI SICUREZZA – IMPORTANTE

Questa apparecchiatura è stata costruita in accordo alle norme di sicurezza EN60065. Il prodotto non deve essere sottoposto a schizzi, spruzzi e gocciolamenti, e nessun tipo di oggetto riempito con liquidi, come ad esempio tazze di caffè, deve essere appoggiato sul dispositivo. Per una perfetta sicurezza ed al fine di evitare eventuali rischi di scossa elettrica o d'incendio vanno osservate le seguenti misure di sicurezza:

- o Assicurarsi che il selettore di cambio tensione sia posizionato sul valore corretto.
- o Assicurarsi che la portata ed il tipo di fusibili siano quelli prescritti dalla casa costruttrice. (I)
- o L'apparecchiatura deve avere un collegamento di messa a terra ben eseguito; anche la connessione rete deve avere un collegamento a terra.
- o Il cavo di alimentazione a corredo dell'apparecchiatura deve essere collegato come segue:

Filo tensione—Marrone Neutro—Blu Massa—Verde/Giallo

AVISO IMPORTANTE DE SEGURIDAD

Esta unidad cumple con la norma de seguridad EN60065. La unidad no debe ser expuesta a goteos o salpicaduras y no deben colocarse sobre el equipo recipientes con líquidos, como tazas de café. Para asegurarse un funcionamiento seguro y prevenir cualquier posible peligro de descarga o riesgo de incendio, se han de observar las siguientes precauciones:

- o Asegúrese que el selector de tensión esté ajustado a la tensión correcta para su alimentación. (E)
- o Asegúrese que los fusibles colocados son del tipo y valor correctos, tal como se marca en la unidad.
- o La unidad debe ser puesta a tierra, conectándola a un conector de red correctamente cableado y puesto a tierra.
- o El cable de red suministrado con esta unidad, debe ser cableado como sigue:

Vivo—Marrón Neutro—Azul Tierra—Verde/Amarillo

VIKTIGA SÄKERHETSÅTGÄRDER!

Denna enhet uppfyller säkerhetsstandard EN60065. Enheten får ej utsättas för yttre åverkan samt föremål innehållande vätska, såsom kaffemuggar, får ej placeras på utrustningen." För att garantera säkerheten och gardera mot eventuell elchock eller brandrisk, måste följande observeras:

- o Kontrollera att spänningsväljaren är inställd på korrekt nätspänning. (S)
- o Kontrollera att säkringarna är av rätt typ och för rätt strömstyrka så som anvisningarna på enheten föreskriver.
- o Enheten måste vara jordad genom anslutning till ett korrekt kopplat och jordat el-uttag.
- o El-sladden som medföljer denna enhet måste kopplas enligt följande:

Fas—Brun Neutral—Blå Jord—Grön/Gul

BELANGRIJK VEILIGHEIDS-VOORSCHRIFT:

Deze unit voldoet aan de EN60065 veiligheids-standaards. Dit apparaat mag niet worden blootgesteld aan vocht. Vanwege het risico dat er druppels in het apparaat vallen, dient u er geen vloeistoffen in bekertjes op te plaatsen. Voor een veilig gebruik en om het gevaar van elektrische schokken en het risico van brand te vermijden, dienen de volgende regels in acht te worden genomen:

- o Controleer of de spanningscarroussel op het juiste Voltage staat. (NL)
- o Gebruik alleen zekeringen van de aangegeven typen en waarden.
- o Aansluiting van de unit alleen aan een geaarde wandcontactdoos.
- o De netkabel die met de unit wordt geleverd, moet als volgt worden aangesloten:

Fase—Bruin Nul—Blauw Aarde—Groen/Geel

Fusing Information



WARNING: To reduce the risk of fire, replace fuses only with the same type and rating.

Both units use a universal switching power supply that handles the full range of nominal mains voltages between 90 and 264 VAC and any frequency between 50 Hz and 60 Hz.

Check Main Fuse

The Main fuse rating is:

T 1A L (1 Amp, 250 V, 20 mm, time-lag, low breaking capacity) for all operating voltages.



WARNING: The power to the unit must be off when the following steps are performed. Ensure that the main power cable to the unit is not connected to a power source.

1. Open the fuse compartment door in the AC power input housing with a small flat-blade screwdriver (Figure 1). Carefully pull out the fuse carrier.
2. Check that the replacement fuse has the correct rating. The fuse carrier must be inserted into the compartment carefully. *Do not force the carrier into the compartment or both could be damaged.*
3. Snap the fuse compartment door closed.

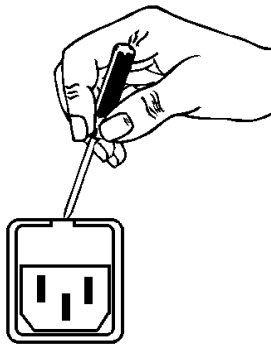


Figure 1 Checking the Main Fuse

Internal Fuse

The switching power supply contains a separate fuse. Most fault conditions should be protected by the main fuse.

If you find it necessary to replace the internal fuse, be certain to replace it with a fuse of the same type and rating as printed on the switching power supply board.

Table of Contents

List of Figures	ix
Chapter 1: Introduction to AERO.1000	11
1.1 Back Panel.....	12
1.2 System Block Diagram.....	13
1.3 Power.....	15
1.4 Menus	16
1.5 Important Setup Parameters	17
1.5.1 Reference	17
1.5.2 Audio Input Select	18
1.5.3 Audio Output Routing	19
1.5.4 Ethernet	20
1.5.5 Video Compensation Delay.....	21
1.5.6 Preset Selection.....	22
1.6 Dolby	23
1.7 Nielsen.....	24
1.8 Compliance	25
Chapter 2: Remote Interface	27
2.1 Setup	27
2.2 Overview	29
2.3 Expert and Non-Expert Modes	30
2.4 Display Presets	31
2.5 Display Windows.....	31
2.6 Loudness Metering	33
2.7 General Notes	34

Chapter 3: Factory Presets	35
Chapter 4: Troubleshooting	37
Chapter 5: Specifications	39

List of Figures

1-1	AERO.1000 back panel	12
1-2	AERO.1000 block diagram	13
1-3	Instance 2 (2+2+Local)	14
1-4	Menu shows signal flow	16
1-5	Yellow popup hint	16
1-6	Clock Reference set to SDI	17
1-7	Available inputs for 5.1+2+Local instance: 1-6 + 7-8 + 9-10	18
1-8	Drop-down menu for each Instance input lists all physical inputs	18
1-9	The AES and SDI Outputs tabs allow source selection for each physical output	19
1-10	Menu shows signal sources available for AES Out 1/2 (same sources for SDI)	19
1-11	IP address, remote port, MAC address, and other system information	20
1-12	Configuring the IP address	20
1-13	SDI video delay settings	21
1-14	Output Delay settings available for each instance	21
1-15	Loading a preset: the available choices are on the right	22
1-16	Decoder settings	23
1-17	Encoder settings	23
1-18	Dialog level (dialnorm) is set under the Target Level tab	24
1-19	Nielsen setup	24
1-20	Adjusting Output Level so the meter matches the target	25
1-21	Adjusting the target level (dialnorm) to match the meter	26
2-1	Remote software installer	27
2-2	Left: Remote control setup screen; Right: AERO.1000 negotiates connection with remote	28

2-3	Home screen in non-Expert mode (default)	29
2-4	Top of remote interface	29
2-5	Breadcrumbs trail, left/right nav, and top/bottom re-size (looks like venetian blinds)	30
2-6	Home screen in Expert mode	30
2-7	Display Settings menu in lower section	31
2-8	Settings for the selected RTA	32
2-9	Settings for the program-specific ITU meter	33
5-1	Electrical	39

Chapter 1: Introduction to AERO.1000

The Linear Acoustic AERO.1000 Audio/Loudness Manager is a state-of-the-art, adaptive, multiband, broadcast audio/loudness processor. The AERO.1000 can apply loudness control and upmixing to sixteen input channels. It outputs 5.1 processed channels, an LtRt version of the main audio channels, and two separate two-channel programs (stereo or mono).

Professional audio metadata can be applied to AERO.1000 to minimize processing and control functions, such as upmixing. AERO.1000 protects itself against loss of incoming metadata with reversion modes that apply plant reference loudness values. The resulting audio is clean, consistent, and appropriately dynamic - perfect for consumer transmission via Dolby® Digital (AC-3) or any other format.

The AERO.1000 can contain up to eight instances, each of which can have one of these program configurations, or Instance Styles:

- **Instance Style 1:** 5.1+2+Local – Includes LtRt/LoRo downmix output
- OR -
- **Instance Style 1:** 2+2+Local – Includes 5.1 channel input downmix

Each instance can also contain:

- Dolby® E/Dolby Digital decoder
- Dolby Digital (AC-3) Encoder (5.1 or stereo)
- Nielsen® audience measurement encoder

The AERO.1000 includes the following features:

- AEROMAX® multiband loudness processing complies with ATSC, ITU and EBU
Includes Input AGC, parametric EQ, multiband AGC and limiting, look-ahead peak limiting, and selectable multiband source noise reduction
- ITU-R BS.1770-3 meter for each output program (16 total) simplifies loudness target calibration
- Selectable, dual upmixers utilize industry-standard UPMAX® II algorithm
- HD/SD-SDI I/O for 16 channels of embedded audio and VANC metadata
- Dual, redundant, auto-ranging power supplies
- 16 channels of AES input via four AES3-ID BNC connectors and one DB25 connector
- Compensating SD/HD video delay
- Relay bypass of all critical signals

This rest of this chapter includes:

- a description of back panel connectors;
- system block diagrams;
- an introduction to AERO.1000's displays and menus;
- a summary of important setup parameters.

See *Connector Pinouts* on page 41 for AES and analog connector, metadata, and GPI pinout tables.

1.1 Back Panel

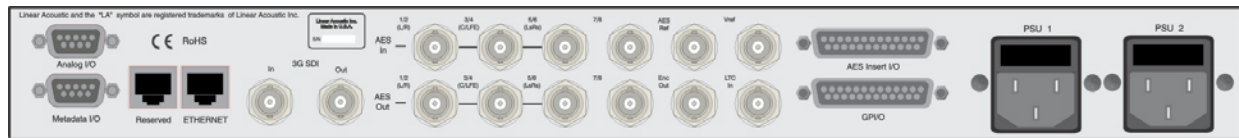


Figure 1-1 AERO.1000 back panel

Figure 1-1 shows the AERO.1000 back panel. Its connector functions are described below from left to right:

- **Analog I/O** (DB9) – Stereo +4 dBu I/O (not currently used)
- **Metadata I/O** (DB9) – RS-485 metadata (no crossover cable required)
- **Reserved** (RJ45) – Reserved for future use (not connected internally)
- **ETHERNET** (RJ45) – Auto-senses 100/1000 BASE-T, *connect to stable network*
- **SDI I/O** (dual BNC) – Auto-senses SD/HD; supports 16 audio channels, VANC metadata, and has internal compensating video delay
- **Main AES I/O** (BNC) – 16 I/O channels
- **AES Ref** (BNC) – Apply 48 kHz DARS (Digital Audio Ref Signal), or any AES signal, but not video. Use only if SDI embedding is disabled.
- **ENC Out** (BNC) – Encoder output, fed in parallel with AES 15/16
- **Vref** (BNC) – Video reference input (not currently supported)
- **LTC In** (BNC) – LTC timecode input (not currently supported)
- **AES I/O** (DB25) – AES channels 9–16, unbalanced (see Table 5-4 on page 42)
- **GPI/O** (DB25) – Eight parallel inputs, 5-V TTL levels, active low (see Table 5-5 on page 43)
- **PSU1/PSU2** – AC power inlets

NOTE: All BNC inputs are 75-ohm internally terminated.

1.2 System Block Diagram

Figure 1-2 shows AERO.1000's physical I/O on the left and right sides, respectively, and Instance 1 processing (5.1+2+Local) in shaded areas.

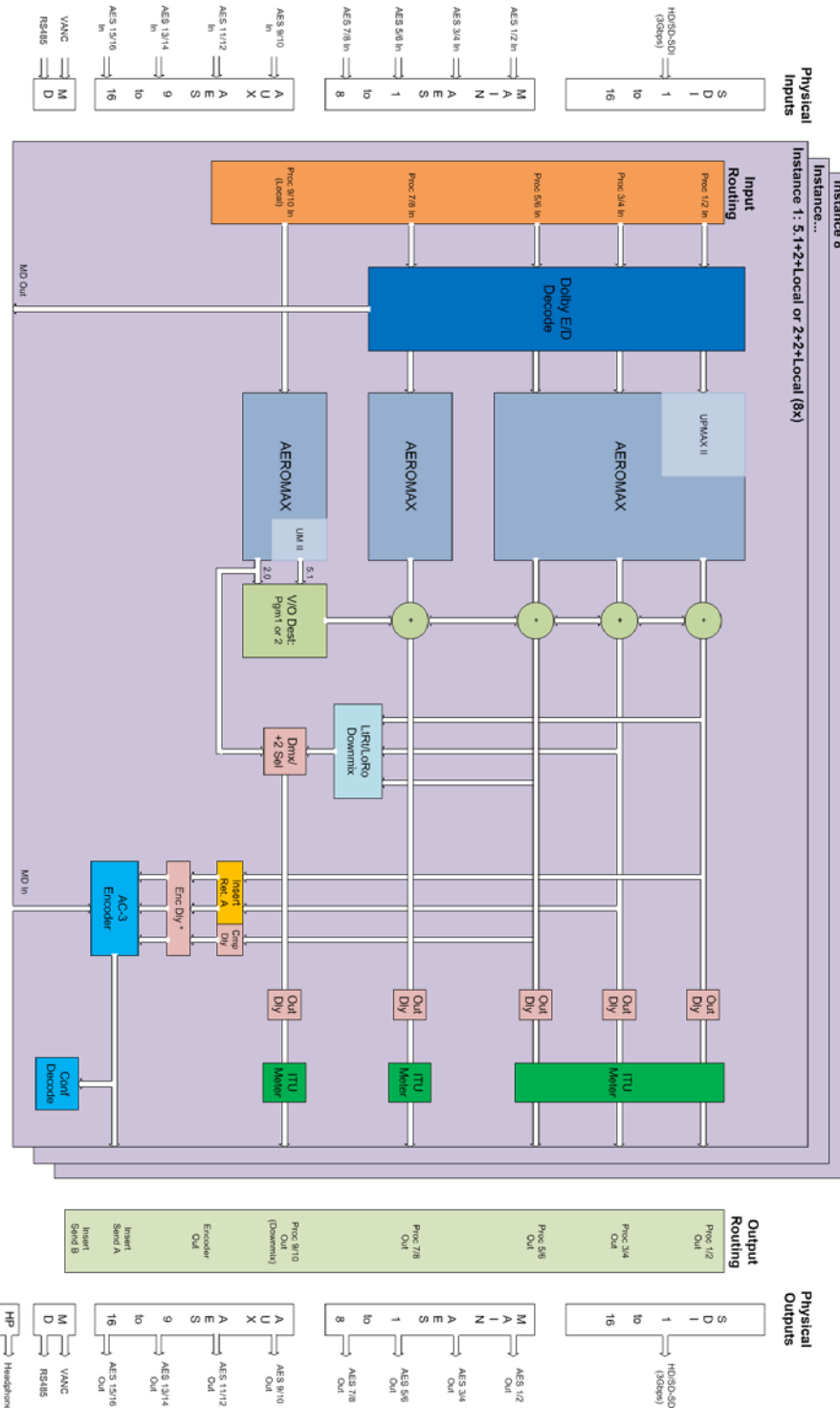


Figure 1-2 AERO.1000 block diagram

Figure 1-3 shows a detailed view of Instance 2 (2+2+Local).

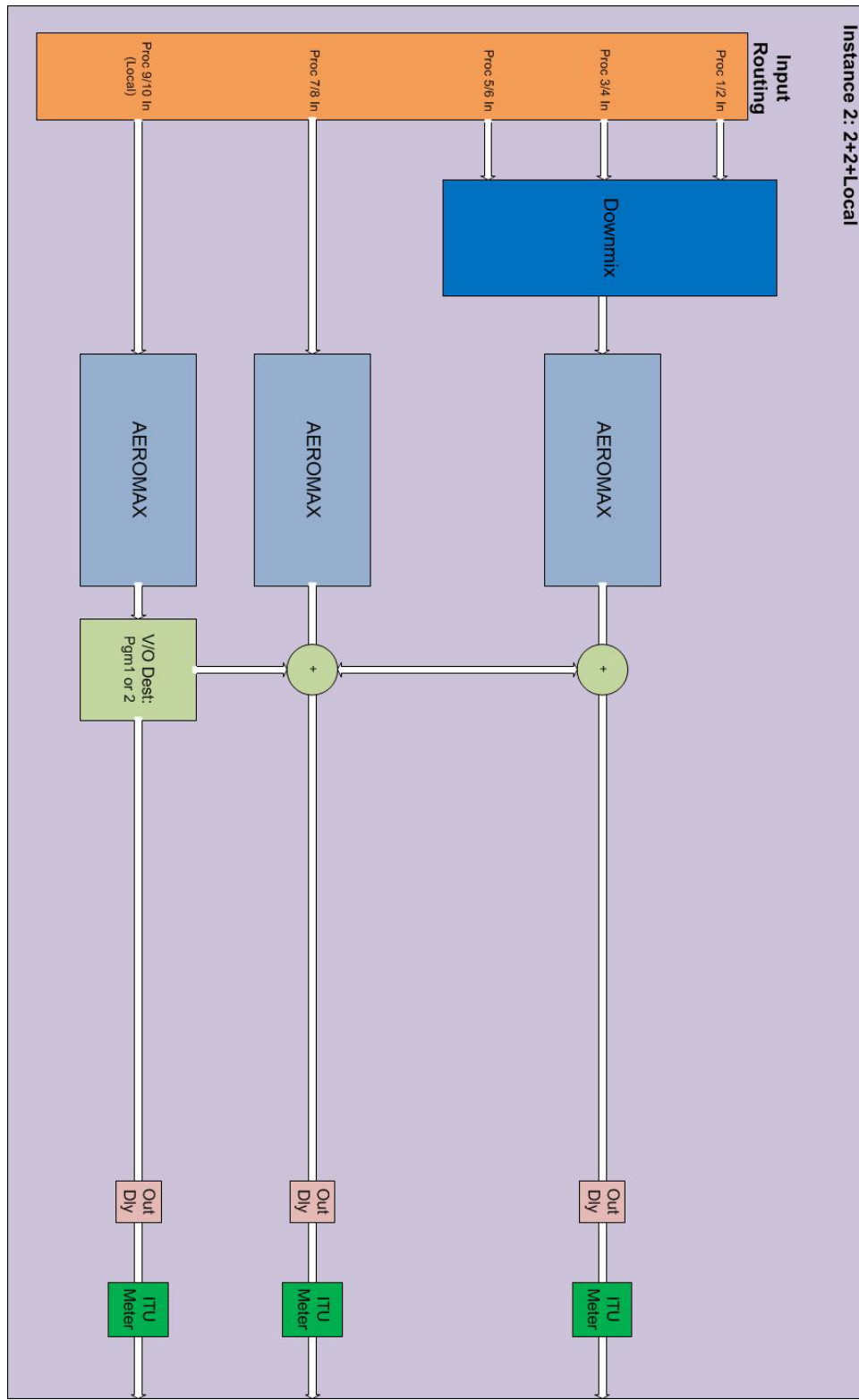


Figure 1-3 Instance 2 (2+2+Local)

1.3 Power

The AERO.1000 is equipped with two power supplies (dual PSUs). Always connect BOTH power inlets to clean AC power sources, ideally from separate feeds. Remember, this is primarily to protect you against unreliable *power sources*, and not from problems with AERO.1000's power supplies.

We strongly recommend using an uninterruptible power supply (UPS) on at least one of the AC power feeds; separate units should be used for each inlet.

Since there is no on/off switch on the AERO.1000, connect AC power to both inlets to power the unit on. The blue light behind the Linear Acoustic logo illuminates, the LCD screen shows the Linear Acoustic logo, and the fans turn on. When the IP address of the unit appears on the LCD screen, start-up is complete and it is ready to use. This process may take up to two minutes.

To power off, just remove both AC power cords from the unit.

1.4 Menus

AERO.1000's menus are hierarchical and follow logical signal processing flows from left to right, top to bottom. Figure 1-4 shows Instance 1 Input Source selection, and this flow is illustrated by the light gray boxes below the meters.



Figure 1-4 Menu shows signal flow

A parameter changed from its stored value is displayed in yellow. When saved, it returns to white.

The menu displays tips and hints in yellow to explain a function or why it is inactive. For example, Figure 1-5 shows why the IP Address field is grayed out and inactive.

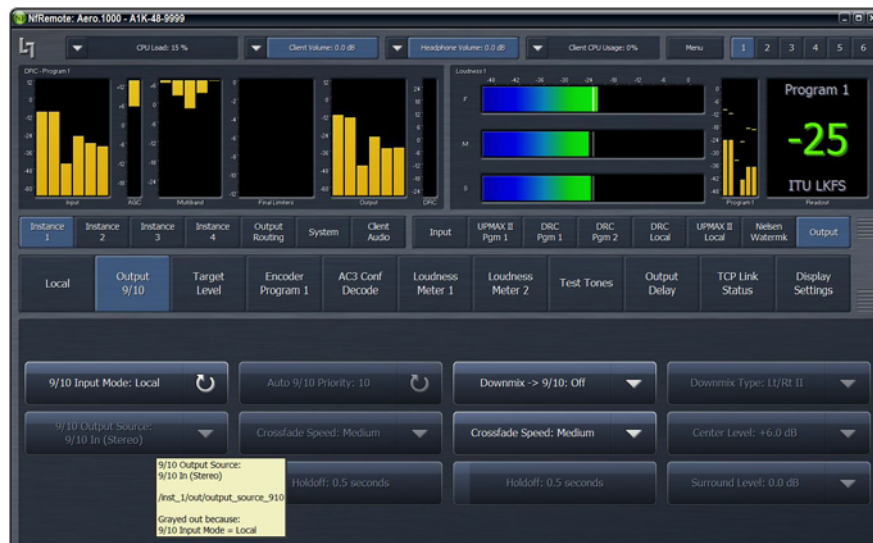


Figure 1-5 Yellow pop up hint

1.5 Important Setup Parameters

1.5.1 Reference

The AERO.1000 can be referenced to:

- AES DARS (or any AES signal applied to the Ref In connector);
- AES In 1
- SDI
- Internal 48 kHz (standalone use only).

NOTE: *If SDI embedding is enabled, clock reference will be forced to SDI automatically. Otherwise, proper reference MUST be selected for glitch-free operation!*

Figure 1-6 shows the clock reference set to SDI. The popup hint informs you that the selection is inactive because SDI Embedding is on.

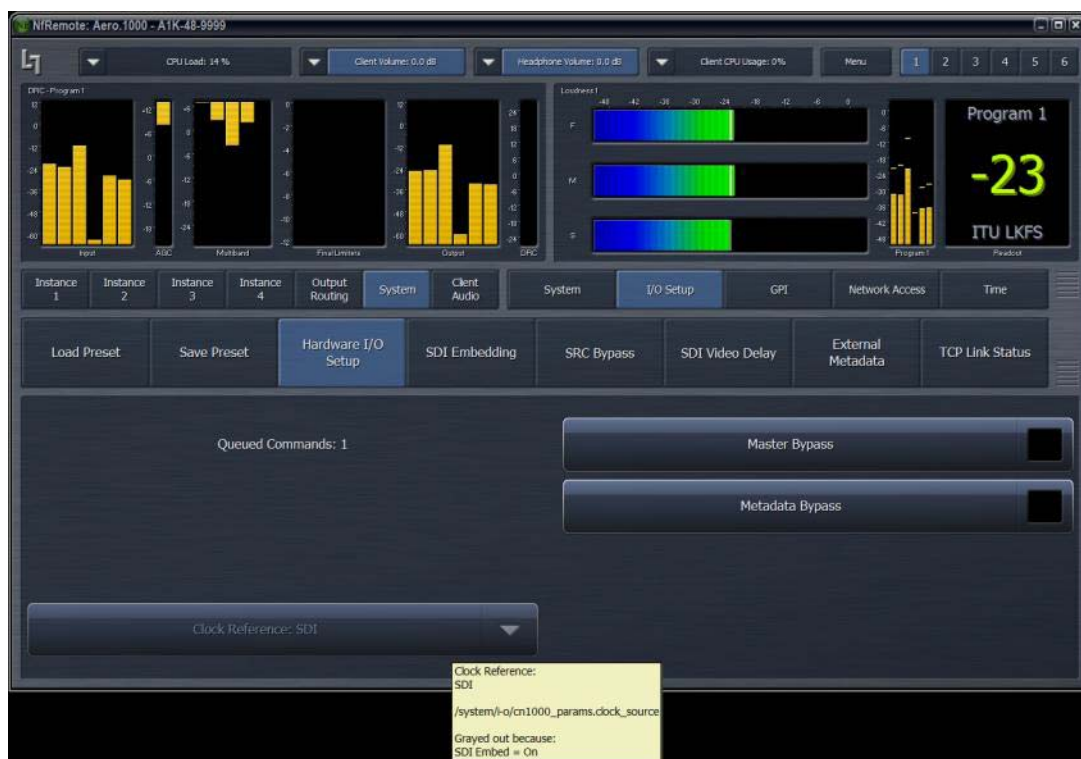


Figure 1-6 Clock Reference set to SDI

1.5.2 Audio Input Select

Since a single physical input can feed multiple instances, each instance has a built-in router to select audio in pairs.



Figure 1-7 Available inputs for 5.1+2+Local instance: 1–6 + 7–8 + 9–10



Figure 1-8 Drop-down menu for each Instance input lists all physical inputs

1.5.3 Audio Output Routing

Since one physical Output can come from just one source, a single output router configures each of the 16 AES and 16 SDI outputs.



Figure 1-9 The AES and SDI Outputs tabs allow source selection for each physical output

Note that any one Instance or Encoder output can go to all physical outputs if desired. Any AES or SDI input pair can be routed to any AES or SDI output pair without processing.



Figure 1-10 Menu shows signal sources available for AES Out 1/2 (same sources for SDI)

1.5.4 Ethernet

The Ethernet connection, like the reference signal, must be stable and consistent. Audio glitches may be audible on air if Ethernet is interrupted. Although initially configured for DHCP (auto-IP address), static IP addresses can also be entered explicitly.



Figure 1-11 IP address, remote port, MAC address, and other system information



Figure 1-12 Configuring the IP address

1.5.5 Video Compensation Delay

Video compensation delay can re-time audio and video/ancillary data signals from SDI In to SDI Out to match processing delay. The exact processing delay depends on the presence of Dolby encoding/decoding and Nielsen Watermark options; normal practice is to set the video delay to the next whole video frame value (different for NTSC and PAL, of course). Rough timing is accomplished via the Delay control (millisecond), and more precise timing via the Fine control (microsecond). After setting the video delay, specify the A/V lip-sync in the I/O Menu using the Utility Audio Delays.



Figure 1-13 SDI video delay settings



Figure 1-14 Output Delay settings available for each instance

1.5.6 Preset Selection

The factory default is TV 5B Gen, but several others are included and can be selected for each instance. Note that Factory presets, which cannot be overwritten, are white. User presets, which can be added and modified, are yellow.



Figure 1-15 Loading a preset: the available choices are on the right

1.6 Dolby

Dolby E and Dolby Digital decoding are available on a per-technology/per-instance basis. The decoder shows bitstream status and two settings:

- Decode 7/8 (Dolby E) – Selects whether 7/8 audio comes from the input or the Dolby E decoder. This has no function when decoding Dolby Digital.
- Bypass routing – Determines where PCM audio goes when the decoder detects the input is not Dolby E or Dolby Digital



Figure 1-16 Decoder settings

The Dolby Digital Encoder has a few settings; *dialnorm* is located under Target Level (see Figure 1-18).



Figure 1-17 Encoder settings



Figure 1-18 Dialog level (dialnorm) is set under the Target Level tab

1.7 Nielsen

If the Nielsen Watermark option is present, MAKE SURE to configure network settings, and select a valid, operational NTP server. Then enter the Site ID (SID) and Check Digits supplied by Nielsen.

NOTE: Linear Acoustic CANNOT assign these settings. They are supplied and monitored by Nielsen.



Figure 1-19 Nielsen setup

1.8 Compliance

Simply setting up the AERO.1000 in-line and assigning a factory preset (other than Protection Limit, which is essentially Bypass) will result in smooth, viewer-pleasing audio and compliance.

The next step is to make sure that the average audio loudness matches the target loudness value set in the final encoder. Using the built-in metering makes this process simple. Choose ONE of these processes to match loudness targets:

Adjust the program's Output Level until the meter matches the target.



Figure 1-20 Adjusting Output Level so the meter matches the target

- OR -

Adjust the Target Level (dialnorm) until it matches the meter.



Figure 1-21 Adjusting the target level (dialnorm) to match the meter

Chapter 2: Remote Interface

The AERO.1000 is currently controlled exclusively via the Remote Interface software. The front panel OLED displays software version, host name, and IP address, and the navigation controller is not yet used. The reasoning behind this will be apparent after using the unit for a short period.

The Remote Interface software is a separate client application that can be downloaded and installed on most recent desktop, laptop, or tablet PCs running Windows XP, Vista, or 7. Touchscreen support is provided for touch-sensitive devices.

All AERO.1000 parameter adjustments must be made via the remote client. The remote can also stream high quality audio back over the local network to the host computer so different processor patch points can be monitored in real-time.

2.1 Setup

1. Insert the supplied USB key into the computer you wish to install the remote on, or download it from LinearAcoustic.com.

Click the link to the right of the Remote Interface software installer to download it.

2. Copy the installer to a folder or directly onto the desktop.
3. Launch the installer and select from the three options: **Cmd Line Help**, **Just Run**, or **Install**.

Normally, just choose **Install**, which installs the Remote software as a Windows program.

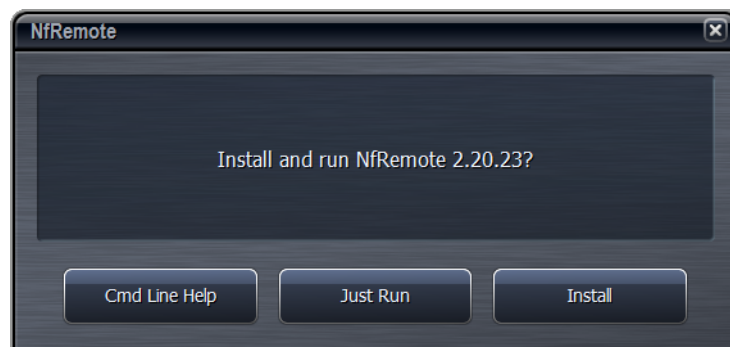


Figure 2-1 Remote software installer

4. Launch the NFRemote software (New Framework Remote), and enter the IP address, password (if required) to connect to the desired unit, and Station info.

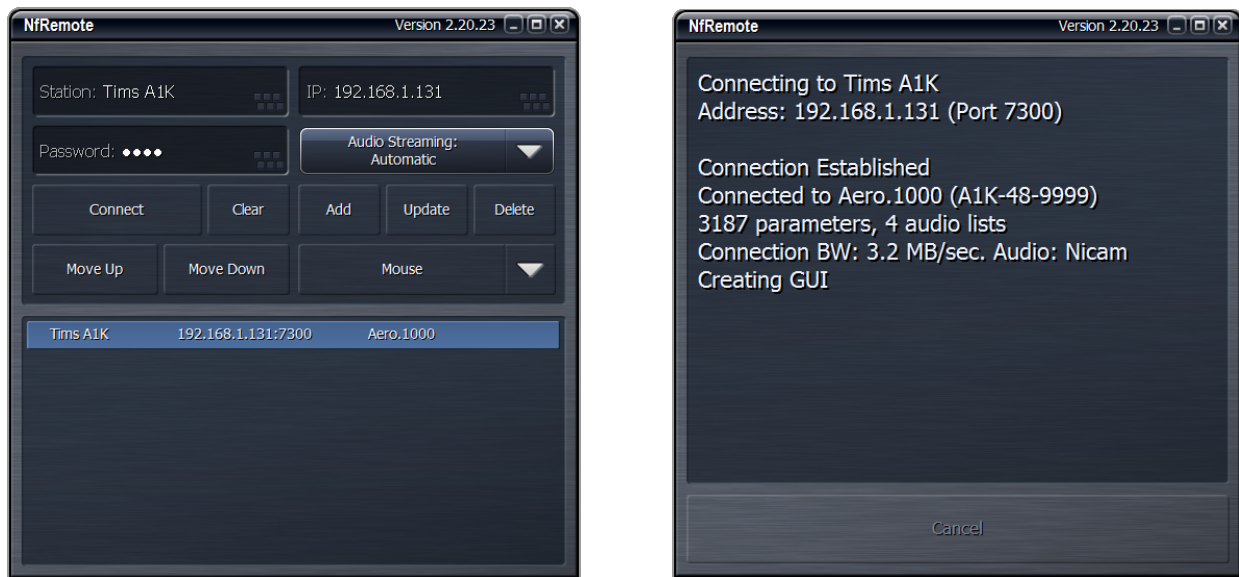


Figure 2-2 Left: Remote control setup screen; Right: AERO.1000 negotiates connection with remote

5. Press **Add** to add this unit and its information to the list.
Multiple units can be added and will appear in a list at the bottom of the remote.
6. Select the desired unit from the list, and click **Connect**.

2.2 Overview

After successful connection, the remote starts at the Home Screen. The remote interface screen can be re-sized via handles at each corner, and the displays automatically adjust to best make use of available screen real estate.



Figure 2-3 Home screen in non-Expert mode (default)

Windows that indicate the AERO.1000's CPU load, client volume (streaming audio), headphone volume, and the host PC's CPU load display at the top of the screen. When the display is small, these controls combine and a drop-down arrow appears, allowing you to activate individual controls.

Click the **Menu** button to display meters only (no controls visible), lock the window's onscreen position, maximize the window, enter full screen mode, or close the window. You can also choose between **Expert** and **Non-Expert** display modes.

To the right of the **Menu** button are six Display Presets that quickly recall saved screen configurations.



Figure 2-4 Top of remote interface

2.3 Expert and Non-Expert Modes

“Expert” and “Non-Expert” refer ONLY to how information and controls are displayed on the screen, and not to the number of controls available or their precision.

The default Non-Expert mode (shown in Figure 2-4) devotes the top of the screen to display windows, while the bottom is reserved for menus and controls. An informational area between these two sections serve as a “breadcrumbs” display indicating your location in the menu hierarchy. The left and right arrow buttons allow you to navigate between recently visited controls.

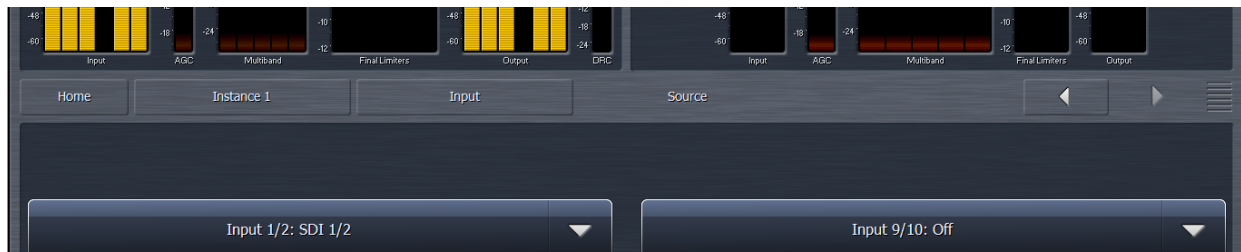


Figure 2-5 Breadcrumbs trail, left/right nav, and top/bottom re-size (looks like venetian blinds)

In the Expert mode, all menus and all controls are displayed on the screen simultaneously (see Figure 2-6). Since this mode inherently makes menus, controls, and their labels smaller, it works best when the remote software window can be large enough to spread things out. Everything is visible at once in Expert mode, so you have direct access to all menus and controls without having to step through the menu structure sequentially.



Figure 2-6 Home screen in Expert mode

Both modes allow you to resize the sections that take up room on the screen. In both modes, small horizontal lines separate the sections. Non-Expert mode has top and bottom sections, while Expert mode has top, center, and bottom sections. Click and drag on these lines to resize each section to divide the screen as needed.

2.4 Display Presets

Six display presets are available. The AERO.1000 remote software first appears with display preset 1 active. Any changes made to the screen (i.e., selecting between Expert/Non-Expert modes, resizing window sections, or choosing the number and/or type of display windows visible) are automatically saved in real time. Switching back to this preset from any other automatically recalls your saved settings.

2.5 Display Windows

Although up to eight windows can be shown on the remote screen at once, each additional display takes away screen space from the others. Depending on your monitor size, you may find it more practical to limit the number of windows, and use display presets to switch among different windows.

Clicking the mouse within a window causes a yellow box to appear around the active display window. The bottom of the active display window also turns into a Display Settings menu.



Figure 2-7 Display Settings menu in lower section

From this menu, you can

- turn displays on and off;
- select the information to display in each: processing meters for DRC 1, 2, and local engines; AC-3 confidence decoding information; I/O meters for each processing instance; I/O meters for the hardware.

AERO.1000 offers the following signal analysis tools:

- Over-sampled digital oscilloscope
- RTA (real time analyzer)
- FFT spectrum analyzer

These valuable monitoring and diagnostic tools can measure and display signals from myriad patch points within AERO.1000. Extensive setup controls are provided for these meter types.



Figure 2-8 Settings for the selected RTA

2.6 Loudness Metering

Each instance has an ITU-BS.1770-3 loudness meter. Note that because the loudness meter is tied to the program, and the settings are likely to be program-specific, setup for the loudness meter is done within the program settings.

The precise patch points available for these tools differ depending on the section of the audio and/or signal path selected for display. The list is detailed and comprehensive.



Figure 2-9 Settings for the program-specific ITU meter

2.7 General Notes

- Multiple computers can connect to the same AERO.1000 unit simultaneously.
- One computer can connect to multiple AERO.1000 units with a single installation of the Remote Interface software.

This is a handy feature for monitoring or adjusting main and backup units at the same facility, or addressing units assigned to additional channels or even different stations.

- Each instance of a remote connection requires some horsepower from AERO.1000's CPU.

Tasks that require significant CPU resources are using multiple instances of the oscilloscope and streaming client audio back from the AERO.1000 to the remote computer. Although it is highly unlikely that your CPU would run out of resources, even in a fully configured unit addressed from several remote computers, it is an important issue to monitor. Fortunately, the CPU percentage meter will warn you when resources begin to run low.

- The available bandwidth on the local network determines how robust the remote connection will be.

The remote software measures available network resources during the initial handshake with AERO.1000. If bandwidth is marginal, some patch points may be unavailable for monitoring on the oscilloscope and spectrum analyzer. Additionally, the quality of the client audio streamed to the remote computer will be adjusted to best match current network resources.

Chapter 3: Factory Presets

This section lists each preset in alphabetical order, as they appear in the AERO.1000 and the remote interface. Each preset's adjustable processing parameters are described. Some presets do not use every parameter. For example, TV 4B Gen does not use the 5th EQ band.

All presets are adjusted so that with the input content averaging around -24 LKFS, the output is optimized to produce -24 LKFS, $\pm 1-2$ dB per ATSC A/85.

NOTE: *This calibrated measurement is made with a Linear Acoustic LQ-1000 or LQ-1, with 10 second integration. Longer integration times produce measurements with less variation.*

Fine Arts 5B Gen

Fine Arts 5-Band General offers medium processing appropriate for artistic programming that may have large dynamic range variations. It produces consistent loudness and spectral balance.

ITU 5B Loudness Lim

ITU 5-Band Loudness Limit utilizes a specially tuned Multiband AGC Limiter and the Final Limiter to slowly adjust the average program loudness to a specific loudness value as measured over time. The Multiband Limiters and Final Limiters act until the very slowly responding wideband AGC catches up. The multiband AGC is bypassed (1:1) so spectral balance is unaffected. This preset can be appropriate for ingest, live, or network transmission applications where content is pre-normalized.

Music 5B Hvy

Music 5-Band Heavy is an aggressive preset for TV music channels that effectively delivers music programming to small televisions and portable receivers.

MVPD 5B Gen

MVPD 5B Gen is intended for Multiple Video Program Distributors who may not have full control of all programs, interstitials or commercials present in a given network stream. It applies medium-light multiband processing, sets Gate and Freeze to prevent background noise pull-up, and is tuned for all genres.

Net 5B Limit

Net 5B Limit applies a final polish to an already consistent network program prior to distribution. A combination of TV 5B Light and ITU 5B Loudness Limit, this preset has a very slow input AGC, and a lighter multiband AGC. It preserves microdynamics and pulls the low-level information up slightly while protecting against long-term loudness shifts.

Protection Limit

Protection Limit sets all processing to unity gain and leaves only look-ahead peak limiters in the signal path. The master output level is set to 0 dB, so applied signals get a unity gain path through the processor.

Reference Settings

This preset offers standard processing test settings that match TV 5B Gen.

Sports 5B Gen

Sports 5-Band General provides medium processing that features quick response with minimal background pumping. It keeps dialogue present and audible, even in rich surround mixes.

TV 4B Gen

Television 4-Band General is essentially the same as TV 5B Gen (below) with four audio bands. This keeps all other settings the same, lessens the density and impact on dialogue, and results in more open sounding audio, albeit with less short-term dynamic loudness control.

TV 5B Gen (Default)

Television 5-Band General is the factory default preset and also the most commonly used. It provides moderate dynamic range processing, and is appropriate for all content types.

TV 5B Hvy

Although Television 5-Band Heavy is similar to TV 5B Gen, its multiband compression ratio is higher, which creates a denser but less dynamic sound useful for systems with smaller speakers.

TV 5B Light

Although Television 5-Band Light is similar to TV 5B Gen, its multiband compression ratio is lower (2:1) for more subtle action. This is an excellent preset for content known to be consistent that needs just a bit of spectral polish. Note that this preset allows more variations without correction, but for already consistent content, this is not an issue.

TV 5B Loud

Television 5-Band Loud is similar to TV 5B Hvy, but louder and punchier.

Chapter 4: Troubleshooting

AERO.1000 is reliable and easy to install. Most problems turn out to be wiring mistakes that apply incorrect input signals. However, it is a powerful processor with many user-adjustable parameters, some of which interact. If you cannot find the source of a problem, simplify the signal path. Hard-bypass is one of AERO.1000's best troubleshooting features. To instantly remove AERO.1000 from the signal path, remove AC power from both inlets.

The unit does not power on

1. Check whether the front panel logo is back-illuminated blue and that the fan is turning when AC power is applied.

The boot process may take up to two minutes. If the unit boots, you are done.

If the fan spins but the unit still does not boot, continue.

2. Remove the AC cords and wait two minutes.
3. Plug both AC cords back in to power the unit on.

AERO.1000 will automatically power back on.

Dialogue causes surrounds to pump

The current preset may be too aggressive, fast, or the Gate and Freeze settings are inappropriate for the content. Since all processing channels in a program are linked, they all receive the same gain reduction and expansion. The loudest channel initiates the gain control, so it can seem that the surrounds are ducked by dialogue. Choose a moderate preset, and then carefully adjust Gate and Freeze so crowd noise does not increase when dialogue stops.

Output audio clicks and pops

The AES Reference may be missing or at the wrong sample rate; the unit expects to lock to 48 kHz. AERO.1000 defaults to an internal 48 kHz reference if the external reference is removed or missing. This allows audio to continue, but with asynchronous inputs and outputs (due to the sample rate converters on each input pair). Make sure to connect a valid reference signal to avoid this issue.

An improper reference signal in equipment located up- or downstream from AERO.1000 can also cause output noise. Use master bypass to verify that AERO.1000 is not the problem.

Input audio has dropouts

The Dolby Digital AC-3 encoder is probably not properly referenced with respect to the DTV video encoder/multiplexer. Normally, all gear is referenced to the local plant.

In some cases (i.e., some Tandberg devices), the multiplexer generates a special reference signal that must be routed back to the Dolby Digital (AC-3) encoder and used as its reference. Consult your DTV encoder reference manual for more details.

Audio sounds strange

Reverberant audio that sounds like a tunnel indicates timing differentials between the channel pairs. Stereo viewers are usually the first to notice such problems. The delay settings in AERO.1000 should all be equal, or set explicitly. Offsets of just a few milliseconds can be audible under the right conditions.

For those using a Dolby DP564 AC-3 decoder, one of monitoring modes uses the analog and digital outputs. This can inject up to 10 ms of delay into the surround channels, which usually elicits complaints. Either bypass the unit or set the monitoring mode to Digital.

Audio issues disappear in bypass

Since AERO.1000 can apply significant gain to incoming signals, previously inaudible sounds may get pulled out of the background. We recommend listening carefully to the station audio for hums, buzzes, clicks, pops, phase issues, frequency response problems, and bass build-up. When amplified, these artifacts can ruin otherwise excellent programming. Moral of the story: make sure the input audio is immaculately clean or it will sound worse in surround!

Audio fixed by re-boot

Re-booting sometimes fixes audio problems by interrupting the AES signals, thereby causing equipment downstream to re-lock to the incoming signals. Selecting a preset with minimal processing (i.e., Protection Limit) may shed further light on the problem.

Audio has artifacts

Sometimes described as “squirrels in the surrounds,” this is almost always caused by low bit-rate source content. Some program delivery services or server systems use MPEG 1, Layer 2 audio data reduction to save bandwidth. At 256 kbps or higher per stereo pair, there are no issues. However, at or below 128 kbps coding artifacts in the original stereo signal are unmasked by upmixing. This inferior content has similar results without upmixing if consumers matrix-decode the signal, which is the default mode for most home A/V receivers. We recommend contacting the program provider or server manufacturer. Bandwidth is so inexpensive that there is no good reason to run lower than 256 kbps.

Chapter 5: Specifications

Figure 5-1 Electrical

Processing	
Structure (up to 8 instances)	<p>Instance Style 1: 5.1+2+2 (local/voiceover input) with downmix output and dual-path upmixing</p> <p>Instance Style 2: 2+2+2 (local/voiceover input) with Auto SAP/DVS</p>
Algorithms	<p>AEROMAX®: ITU-R compliant loudness control via adjustable wideband and multiband processing</p> <p>UPMAX® II: 5.1-channel upmixing, automatic bypass of discrete content</p>
Options	<p>Option 02: Dolby Digital (AC-3) Encoder Outputs a Dolby Digital (AC-3) bitstream Encoder is 5.1 (3/2I) for Instance Style 1, and 2.0 for Instance Style 2</p> <p>Option 06: Dolby E/Dolby Digital Decoder Auto-senses Dolby E, Dolby Digital, or PCM</p> <p>Option 08: Nielsen Watermark Encoder</p>
Headphone Output	
Frequency Response	20 Hz–20 kHz, ±1 dB (Protection Limit preset)
Level	+12 dBu maximum
Connector	1/4-in (6.35-mm) front panel jack with volume control
Digital I/O	
Digital Audio I/O	<p>All inputs are unbalanced, 75-Ω with internal termination</p> <p>1-2, 3-4, 5-6, 7-8, AES Ref use BNC-F connectors</p> <p>Eight channels of auxiliary digital I/O on F-DB25 connector</p> <p>Signal levels per SMPTE 276M/ AES-31D-2001</p> <p>All I/O can be assigned as needed</p>
Remote	TCP/IP remote control and audio monitoring via Remote Interface software, a Windows®-compatible application (included) HTTP server allows get/set control from any OS
Ethernet	100 to 1000 BASE-T via RJ-45 connector
GPI/O Parallel Control Port	DB25-F connector, 0–5 V TTL levels
Metadata Input	F-DB9 connector, 115 kbps, pinout per SMPTE 207M (RS-422/485) Interfaces directly with Dolby Metadata (SMPTE RDD6)
Reference	48 kHz via AES DARS reference or SDI input
HD/SD-SDI Auto-Sensing I/O	<p>De-embed up to 16 audio channels from SDI, process and/or encode, and re-embed up to 16 channels</p> <p>Signal levels per SMPTE 292M /259M</p> <p>Supports SMPTE 2020 A and B VANC metadata</p> <p>Supports up to 1080p/60/59.94/50 Hz</p>

Table 5-1 Physical

Dimensions	2RU H = 3.50 in (90 mm) W = 19 in (483 mm) D = 13.25 in (337 mm)
Net Weight	12.5 lb (6 kg) approximate
Environmental	Operating: 0 – 50°C Non-operating: -20 – 70°C Fan cooled
Power Requirements	Dual redundant auto-sensing power supplies, each rated at 100–240 VAC, 50–60 Hz, 175 W maximum

Latency

Zero timing is achieved via the included Compensating Video Delay and instance audio delays.

The latency of PCM (non-encoded) audio is fixed at 179 ms. Latency for Dolby-encoded audio is fixed at 213 ms.

Nielsen watermark encoding does not cause additional latency. However, bypassing the internal SRC (sample rate conversion) reduces total latency by 3 ms.

To increase the PCM audio latency on the AES outputs so they match the encoded audio, adjust the output delay for each audio pair in the Output>Output Delay menu of each instance.

Connector Pinouts

Table 5-2 Analog I/O (F-DB9)

Pin	Function
1	Shield
2	Tx A Asynchronous Data Out -
3	Rx B Asynchronous Data In +
4	Ground
5	No Connection
6	Ground
7	Tx B Asynchronous Data Out +
8	Rx A Asynchronous Data In -
9	Shield

Table 5-3 Metadata Input Port Pinout

Pin	Connection
1	Shield
2	TX A asynchronous data out –
3	RX B asynchronous data in +
4	Ground
5	NC
6	Ground
7	TX B asynchronous data out +
8	RX A asynchronous data in –
9	Shield

F-DB9 connector with full-duplex RS-485 protocol running at 115 kbps. Pinout is compatible with SMPTE 207M. Pin-for-pin compatible with Dolby Metadata (SMPTE RDD6).

Table 5-4 AES I/O (F-DB25)

Pin	Function
1	AES 9/10 In +
2	AES 11/12 In +
3	AES 13/14 In +
4	AES 15/16 In +
5	AES 9/10 Out +
6	AES 11/12 Out +
7	AES 13/14 Out +
8	AES 15/16 Out +
9	No Connection
10	Ground
11	No Connection
12	Ground
13	Ground
14	AES 9/10 In Ground
15	AES 11/12 In Ground
16	AES 13/14 In Ground
17	AES 15/16 In Ground
18	AES 9/10 Out Ground
19	AES 11/12 Out Ground
20	AES 13/14 Out Ground
21	AES 15/16 Out Ground
22	Ground
23	Ground
24	Ground
25	Ground

Table 5-5 GP I/O Parallel Control Port (F-DB25)

Pin	Function
1	+5 V, 150 mA
2	GPI A (Active Low)
3	GPI B (Active Low)
4	GPI C (Active Low)
5	GPI D (Active Low)
6	GPI E (Active Low)
7	GPI F (Active Low)
8	GPI G (Active Low)
9	GPI H (Active Low)
10	No Connection
11	Status OK
12	No Connection
13	Ground
14	+5 V, 150 mA
15	GPO A (currently unused)
16	GPO B (currently unused)
17	GPO C (currently unused)
18	GPO D (currently unused)
19	GPO E (currently unused)
20	GPO F (currently unused)
21	GPO G (currently unused)
22	GPO H (currently unused)
23	Ground
24	No Connection
25	Ground

Regulatory

North America: Designed to comply with the limits for a class A digital device pursuant to Part 15 of the FCC rules (CFR). Designed for U.S. and Canadian listing with UL.

Europe: Designed to comply with the requirements of Low Voltage Directive 73/23/EEC and EMC Directive 89/336/EEC. Designed for RoHS and WEEE compliance.

